

**Sydney**

Level 2, 37 Bligh Street  
Sydney NSW 2000  
**+61 2 8068 2016**

**Melbourne**

Suite 310, 139 Cardigan Street  
Melbourne VIC 3053  
**+61 3 9923 8081**

**email:** [info@parityconsulting.com.au](mailto:info@parityconsulting.com.au)

**website:** [www.parityconsulting.com.au](http://www.parityconsulting.com.au)

# What We Do

**FY2022**



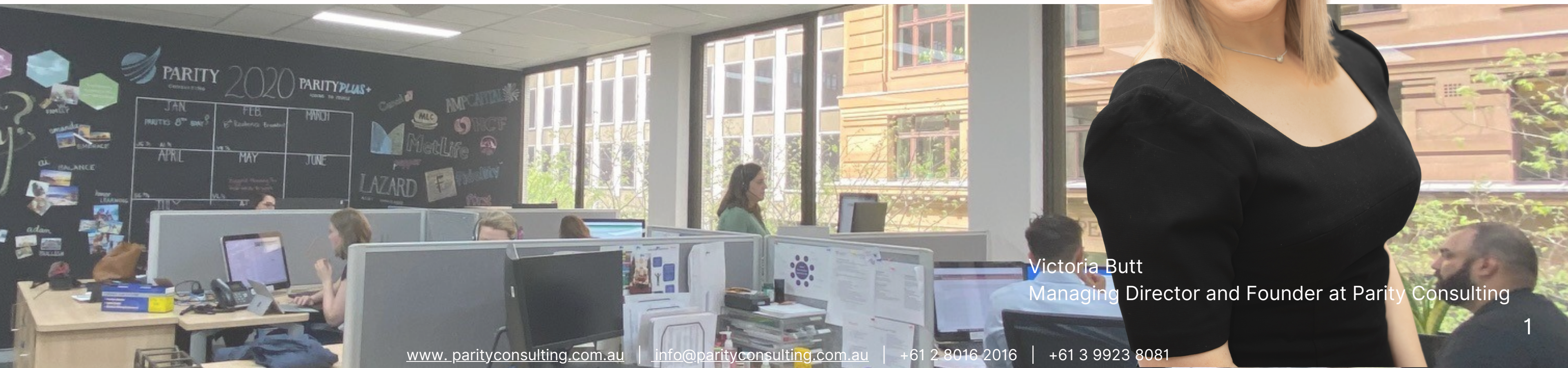
# WHO WE ARE

Parity Consulting is a specialist recruitment consultancy which places top talent in permanent, fixed term contract and consulting professionals in the following disciplines:

- Product Management
- Product Development
- Digital
- Marketing and Communications
- Pricing and Actuarial
- Data Analytics and Engineering



Victoria Butt  
Managing Director and Founder at Parity Consulting







## WHY WORK WITH PARITY?

We ultimately save you TIME by reaching the best (often hidden) talent in a timely and thorough way.

- **Our Reach & Relationships**
- **Our Client Experience**
- **Our Candidate Experience**
- **Tailored Filtering and Assessment**
- **Our Market Insights**
- **Parity *Plus* - our give back initiative**



# DISCIPLINES & SOURCING METHODS

**HEAD HUNTING**

**REFERRALS**

**PARITY  
NETWORKS**

**PARITY *PLUS***  
*Our give back initiative*



**Head of Product,**  
Life Insurance

**Marketing Manager,**  
Asset Management

**Senior Marketing Manager,**  
Asset Management

**Pricing Actuary, Manager,**  
Investments

**Product Manager,**  
Life Insurance

**VP of Product,**  
Software

**Product Marketing Manager,**  
Asset Management

**Product Governance  
Manager,**  
Wealth Management

## **RECENT HIRES**

**Senior Product Manager,**  
Investments

**Head of Marketing,**  
Banking

**Data Scientist,**  
Life Insurance

**Digital Marketing Manager,**  
Wealth Management

**UX Design Manager,**  
Payments

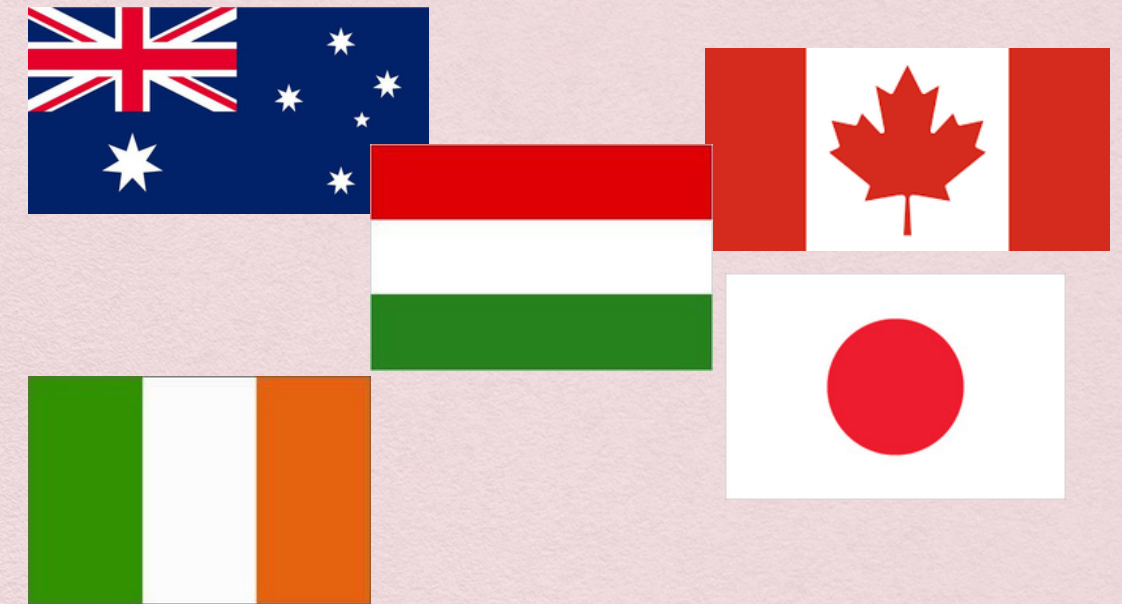
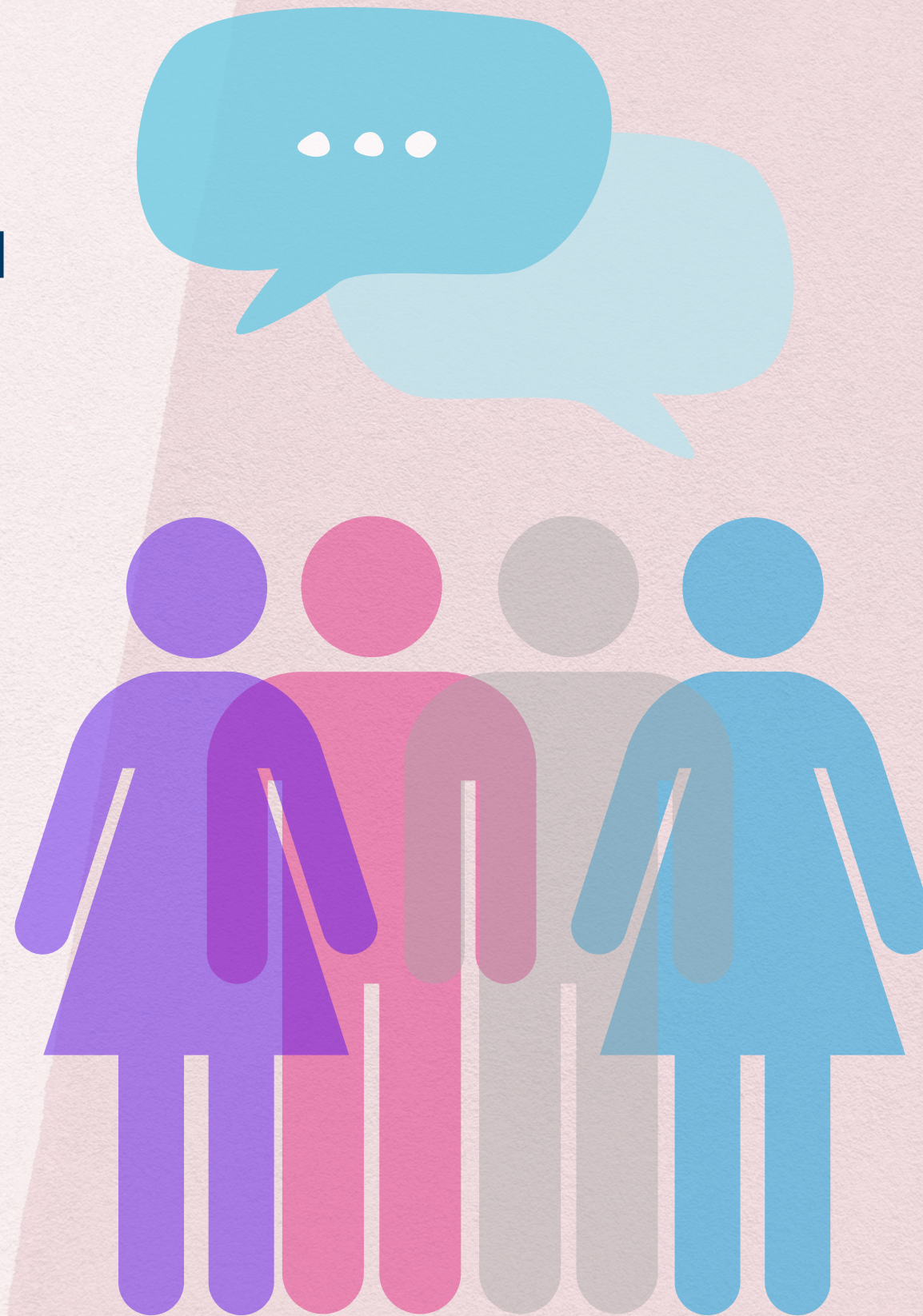
**Actuarial Manager,**  
Insurance



# DIVERSITY & INCLUSION

Our current recruitment strategy relating to diversity, neurodiversity and gender balance ensures that we work to tailor our approach with the clients we work with, in order to present a diverse range of candidates from different cultures, backgrounds as well as personal and professional experiences.

We do not discriminate based on race, sexual preference, cultural background or any other point of difference.



Parity's consultants' range in age from 28 to 55 and we believe this assists us in presenting a diverse range of ages when shortlisting candidates.

We also boast over 10 different nationalities in our office from the UK, Italy, Croatia, Hungary, Ireland, Japan, India and Canada to name a few! Victoria Butt, our Managing Director and Founder is also the Head of Diversity & Inclusion at Entrepreneurs Organisation Sydney.





## WE HAVE INVESTED OVER \$1 MILLION IN THE LAST 10 YEARS ON INITIATIVES WHICH ADD TO OUR COMMUNITIES SKILLS, EXPERIENCES AND NETWORKS

### MARKET UPDATES

Talent Attraction & Engagement in FY2022: [Click here](#)

FY2022 Market Insights & Predictions: [Click here](#)

Superannuation Changes for FY2022: [Click here](#)

Mental Resilience in Times of Disruptive Change: [Click here](#).

Returning to the Workplace: [Click here](#)

Building Mentally Resilient Workforce: [Click here](#)

Effective Digital Networking: [Click here](#)

### SALARY GUIDE & INSIGHTS

FY2021-2022 Salary Guide & Insights - Product Management & Development: [Click here](#)

FY2021-2022 Salary Guide & Insights - Marketing, Communications & Digital: [Click here](#)

### TRAINING & EVENTS

Parity *Picks* - Showcasing Executives Differently:

- [Lorraine Thomas](#) of HCF
- [Justin Howell](#) of Pandal
- [Nicole Mathias-Browne](#) of CFS
- [Moses Samaha](#) of Equifax
- [Andrew Alcock](#) of HUB24
- [Sarah Whiteway](#) of Cuscal
- [Meray El-Khoury](#) of MetLife

Product Lab: [Click here](#)

Marketing Training: [Click here](#)

**PARITY PLUS+**  
ADDING TO PEOPLE



# OUR TEAM

**Victoria Butt**, Managing Director and Founder  
Product Management & Development  
Executive Search  
vbutt@parityconsulting.com.au  
+61 402 418 326

**Agnes Villanyi**, Senior Consultant  
Product Management & Development  
Wealth Management, Superannuation &  
Investments  
avillanyi@parityconsulting.com.au  
+61 405 395 021

**Eva Nichols**, Specialist Consultant  
Product Management & Development  
Wealth Management, Superannuation &  
Investments  
enichols@parityconsulting.com.au  
+61 451 961 682

**Mirjana Males**  
Business Manager  
mmales@parityconsulting.com.au  
+61 421 581 566

**Amanda Glacken**, Division Lead  
Product Management & Development  
Digital, Software and Fintech  
aglacken@parityconsulting.com.au  
+61 450 291 368

**Laura King**, Senior Consultant  
Product Management and Development  
Banking and Payments  
lking@parityconsulting.com.au  
+61 405 538 706

**Prue Officer**, Specialist Consultant  
Marketing, Communications & Digital  
Digital, Software and Fintech  
pofficer@parityconsulting.com.au  
+61 452 388 229

**Vanessa Lalani**, Division Lead  
Marketing, Communications & Digital  
Financial Services  
vlalani@parityconsulting.com.au  
+61 410 001 819

**Edwina Stuckey**, Senior Consultant  
Marketing, Communications & Digital  
Financial Services  
estuckey@parityconsulting.com.au  
+61 405 381 550

**Ai Iwami**, Specialist Consultant  
Marketing, Communications & Digital  
Financial Services  
aiwami@parityconsulting.com.au  
+61 451 193 774

**Trish Aspell**, Senior Consultant  
Product Management and Development  
Insurance - Life, Health & General  
taspell@parityconsulting.com.au  
+61 410 001 635

**Matt Armstrong**, Specialist Consultant  
Pricing & Actuarial  
Financial Services  
marmstrong@parityconsulting.com.au  
+61 451 966 243

**Hima Arafath**, Specialist Consultant  
Data Analytics & Engineering  
Financial Services  
harafath@parityconsulting.com.au  
+61 452 089 967

**Paul Clarke**  
Finance Manager  
accounts@parityconsulting.com.au  
+61 2 8068 2016







“

Working with Parity Consulting was a seamless experience. The genuine approach and commitment to ensure both the business and candidate are happy with the successful placement was a standout with Parity. A consultancy I would highly recommend.

”

~Product professional, Investments



# OUR VALUES



## Invest

We educate and empower through Parity Plus initiatives



## Accountable

We do what we say we are going to do



## Caring

True parity through investing in ALL our relationships



## Fun

We love what we do and it shows in our results



## Knowledge

We understand individual needs by immersing ourselves in our market



# CONTACT US

## Sydney

Level 2, 37 Bligh Street  
Sydney NSW 2000  
+61 2 8068 2016

## Melbourne

Suite 310, 139 Cardigan Street  
Melbourne VIC 3053  
+61 3 9923 8081

