

Sydney

Level 2, 37 Bligh Street
Sydney NSW 2000

+61 2 8068 2016

Melbourne

Suite 504, 365 Little Collins Street
Melbourne VIC 3000

+61 3 9088 0326

email: info@parityconsulting.com.au

website: www.parityconsulting.com.au

What We Do

FY2022

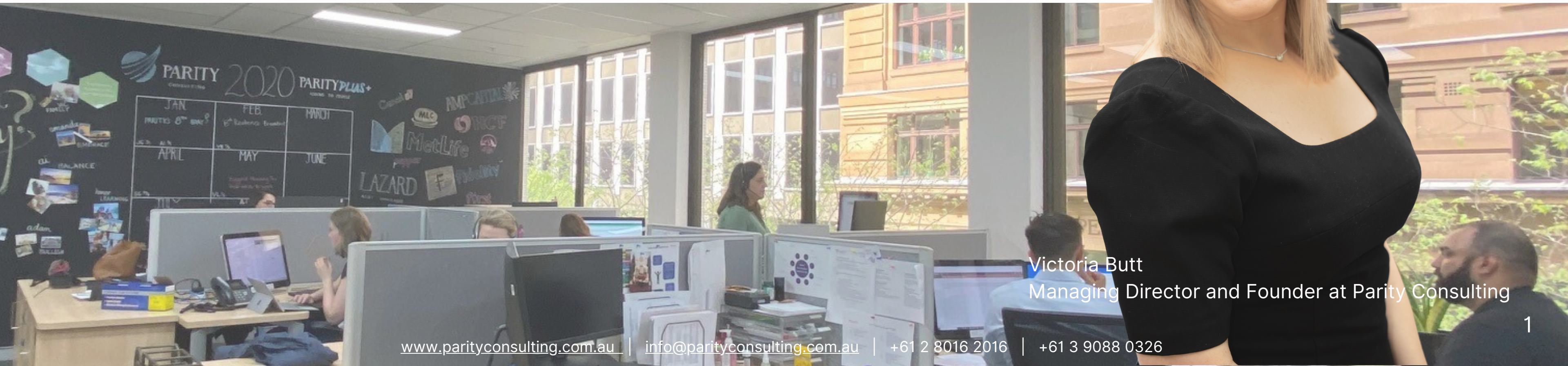
WHO WE ARE

Parity Consulting is a micro specialist recruitment consultancy which places top talent in permanent, fixed term contract and consulting professionals in the following disciplines:

- Product Management
- Product Development
- Marketing and Communications
- Digital
- Pricing and Actuarial
- Data Science and Engineering



Victoria Butt
Managing Director and Founder at Parity Consulting





WHY WORK WITH PARITY?

We ultimately save you TIME by reaching the best (often hidden) talent in a timely and thorough way.

- **Our Reach & Relationships**
- **Our Client Experience**
- **Our Candidate Experience**
- **Tailored Filtering and Assessment**
- **Our Market Insights**
- **Parity *Plus* - our give back initiative**

DISCIPLINES & SOURCING METHODS

HEAD HUNTING

REFERRALS

**PARITY
NETWORKS**

PARITY *PLUS*
Our give back initiative

Head of Product,
Life Insurance

Marketing Manager,
Asset Management

Senior Marketing Manager,
Asset Management

Pricing Actuary, Manager,
Investments

Product Manager,
Life Insurance

VP of Product,
Software

Product Marketing Manager,
Asset Management

**Product Governance
Manager,**
Wealth Management

RECENT HIRES

Senior Product Manager,
Investments

Head of Marketing,
Banking

Investment Writer,
Asset Management

Digital Marketing Manager,
Wealth Management

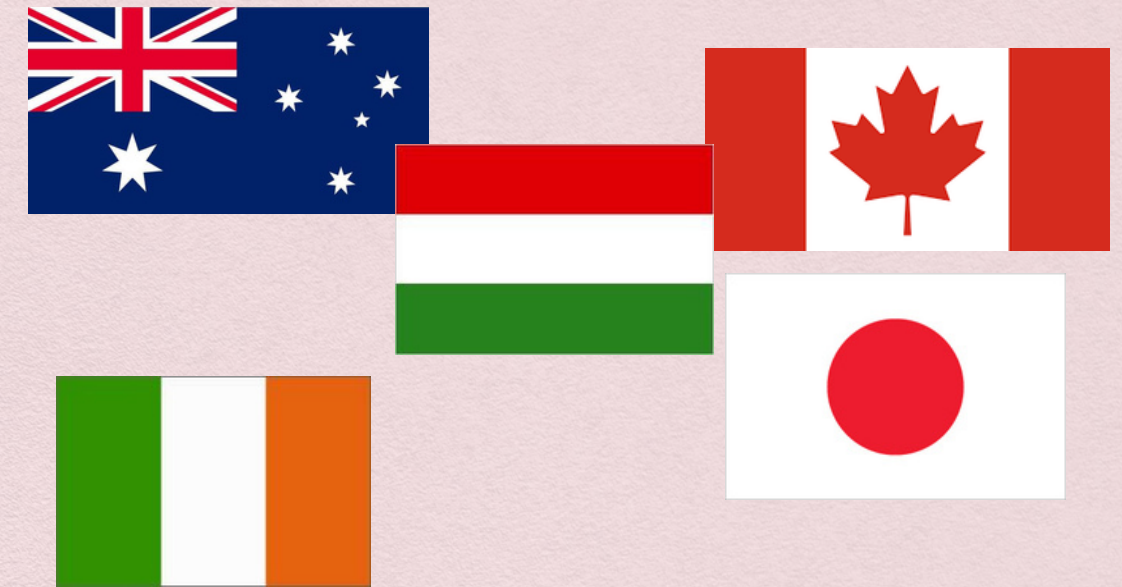
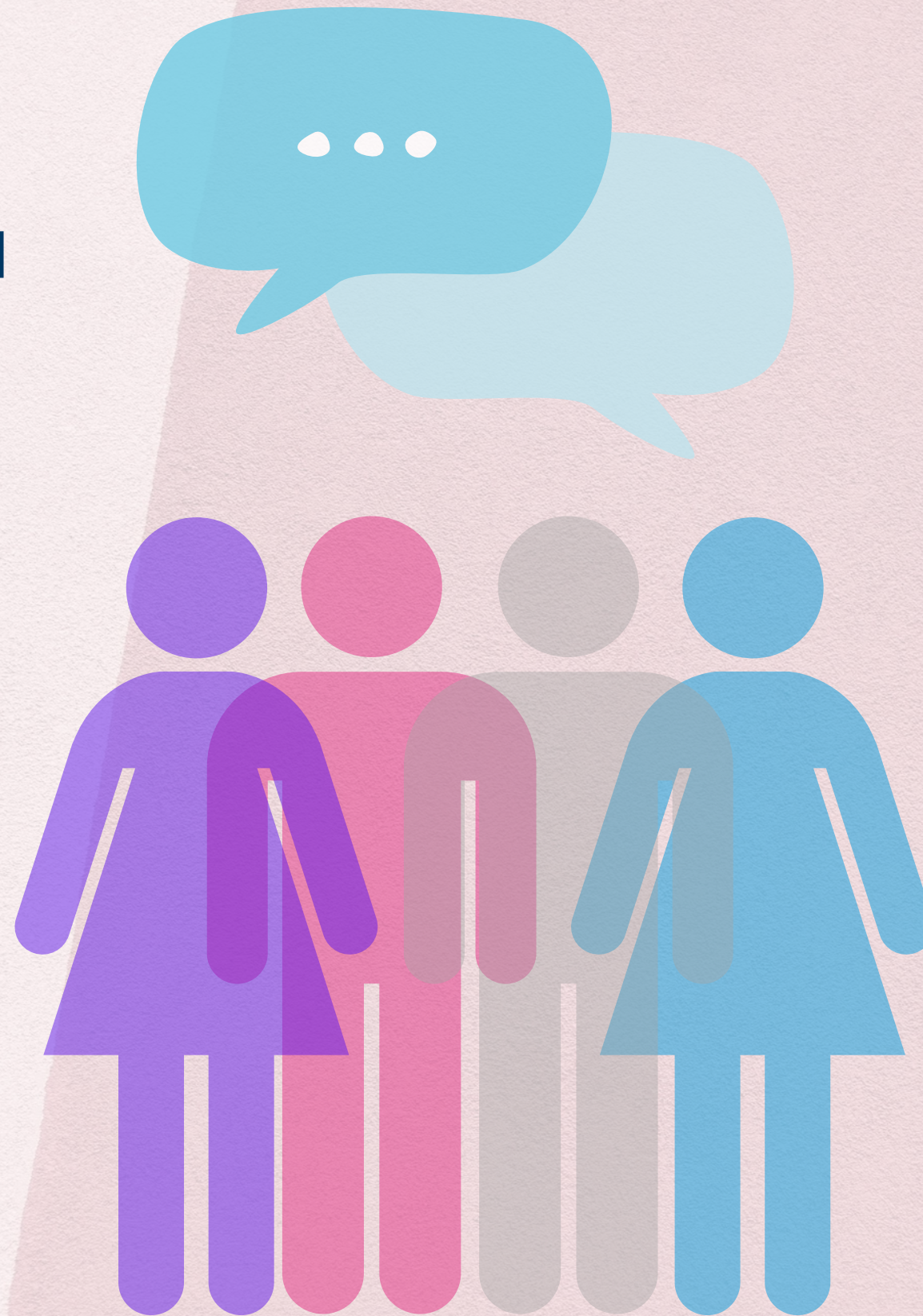
UX Design Manager,
Payments

Actuarial Manager,
Insurance

DIVERSITY & INCLUSION

Our current recruitment strategy relating to diversity and gender balance ensures that we work to tailor our approach with the clients we work with, in order to present a diverse range of candidates from different cultures, backgrounds as well as personal and professional experiences.

We do not discriminate based on race, sexual preference, cultural background or any other point of difference.



Parity's consultants' range in age from 28 to 55 and we believe this assists us in presenting a diverse range of ages when shortlisting candidates.

We also boast over 10 different nationalities in our office from the UK, Italy, Croatia, Hungary, Ireland, Japan, India and Canada to name a few! Victoria Butt, our Managing Director and Founder is also the Head of Diversity & Inclusion at Entrepreneurs Organisation Sydney.



WE HAVE INVESTED OVER \$1 MILLION IN THE LAST 9 YEARS ON INITIATIVES WHICH ADD TO OUR COMMUNITIES SKILLS, EXPERIENCES AND NETWORKS

MARKET UPDATES

Talent Attraction & Engagement in FY2022: [Click here](#)

FY2022 Market Insights & Predictions: [Click here](#)

Superannuation Changes for FY2022: [Click here](#)

Mental Resilience in Times of Disruptive Change: [Click here](#).

Returning to the Workplace: [Click here](#)

Building Mentally Resilient Workforce: [Click here](#)

Effective Digital Networking: [Click here](#)

SALARY GUIDE & INSIGHTS

FY2021-2022 Salary Guide & Insights - Product Management & Development: [Click here](#)

FY2021-2022 Salary Guide & Insights - Marketing, Communications & Digital: [Click here](#)

TRAINING & EVENTS

Parity *Picks* - Showcasing Executives Differently:

- [Lorraine Thomas](#) of HCF
- [Justin Howell](#) of Pental
- [Nicole Mathias-Browne](#) of CFS
- [Moses Samaha](#) of Equifax
- [Andrew Alcock](#) of HUB24

Product Lab: [Click here](#)

Marketing Training: [Click here](#)

PARITY **PLUS+**
ADDING TO PEOPLE

OUR TEAM

Victoria Butt, Managing Director and Founder
Product Management & Development
Executive Search
vbutt@parityconsulting.com.au
+61 402 418 326

Agnes Villanyi, Senior Consultant
Product Management & Development
Wealth Management, Superannuation &
Investments
avillanyi@parityconsulting.com.au
+61 405 395 021

Eva Nichols, Associate Consultant
Product Management & Development
Wealth Management, Superannuation &
Investments
enichols@parityconsulting.com.au
+61 451 961 682

Mirjana Males
Business Manager
mmales@parityconsulting.com.au
+61 421 581 566

Amanda Glacken, Division Lead
Product Management & Development
Digital, Software and Fintech
aglacken@parityconsulting.com.au
+61 450 291 368

Suzan Dcruz, Specialist Consultant
Product Management and Development
Digital, Software and Fintech
sdcruz@parityconsulting.com.au
+61 416 937 767

Prue Officer, Associate Consultant
Marketing, Communications & Digital
Digital, Software and Fintech
pofficer@parityconsulting.com.au
+61 452 388 229

Vanessa Lalani, Division Lead
Marketing, Communications & Digital
Financial Services
vlalani@parityconsulting.com.au
+61 410 001 819

Ai Iwami, Specialist Consultant
Marketing, Communications & Digital
Financial Services
aiwami@parityconsulting.com.au
+61 451 193 774

Edwina Stuckey, Specialist Consultant
Marketing, Communications & Digital
Financial Services
estuckey@parityconsulting.com.au
+61 405 381 550

Trish Aspell, Senior Consultant
Product Management and Development
Banking, Insurance and Payments
taspell@parityconsulting.com.au
+61 410 001 635

Matt Armstrong, Associate Consultant
Pricing & Actuarial
Financial Services
marmstrong@parityconsulting.com.au
+61 451 966 243

Hima Arafath, Associate Consultant
Data Science & Engineering
Financial Services
harafath@parityconsulting.com.au
+61 452 089 967

Paul Clarke
Finance Manager
accounts@parityconsulting.com.au
+61 2 8068 2016



Working with Parity Consulting was a seamless experience. The genuine approach and commitment to ensure both the business and candidate are happy with the successful placement was a standout with Parity. A consultancy I would highly recommend.

~Product professional, Investments

OUR VALUES



Invest

We educate and empower through Parity Plus initiatives



Accountable

We do what we say we are going to do



Caring

True parity through investing in ALL our relationships



Fun

We love what we do and it shows in our results



Knowledge

We understand individual needs by immersing ourselves in our market

CONTACT US

Sydney

Level 2, 37 Bligh Street
Sydney NSW 2000
+61 2 8068 2016

Melbourne

Suite 504, 365 Little Collins Street
Melbourne VIC 3000
+61 3 9088 0326

