

Sydney

Level 2, 37 Bligh Street
Sydney NSW 2000
+61 2 8068 2016

Melbourne

Suite 504, 365 Little Collins Street
Melbourne VIC 3000
+61 3 9016 8606

email: info@parityconsulting.com.au

website: www.parityconsulting.com.au

What We Do

FY2021

WHO WE ARE

Parity Consulting is a micro specialist recruitment consultancy which places top talent in permanent, fixed term contract and consulting professionals in the following disciplines;

- Product Management
- Product Development
- Marketing and Communications
- Digital
- Pricing and Actuarial



Victoria Butt
Managing Director and Founder at Parity Consulting



WHY WORK WITH PARITY?

We ultimately save you TIME by reaching the best (often hidden) talent in a timely and thorough way.

- **Our Reach & Relationships**
- **Our Client Experience**
- **Our Candidate Experience**
- **Tailored Filtering and Assessment**
- **Our Market Insights**
- **Parity *Plus* - our give back initiative**

DISCIPLINES & SOURCING METHODS

HEAD HUNTING

REFERRALS

**PARITY
NETWORKS**

PARITY PLUS
Our give back initiative

Head of Product,
Life Insurance

Marketing Manager,
Asset Management

Senior Product Manager,
Life Insurance

Pricing Actuary, Manager,
Investments

Product Manager,
Life Insurance

VP of Product,
Software

Product Marketing Manager,
Asset Management

**Product Governance
Manager,**
Wealth Management

RECENT HIRES

Senior Product Manager,
Investments

Head of Marketing,
Banking

Investment Writer,
Asset Management

Digital Marketing Manager,
Wealth Management

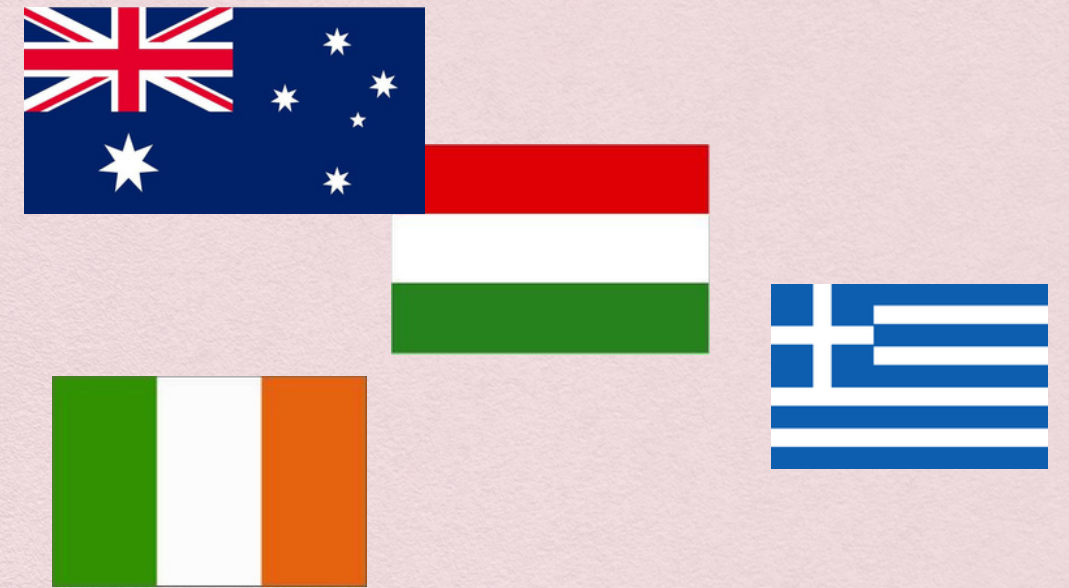
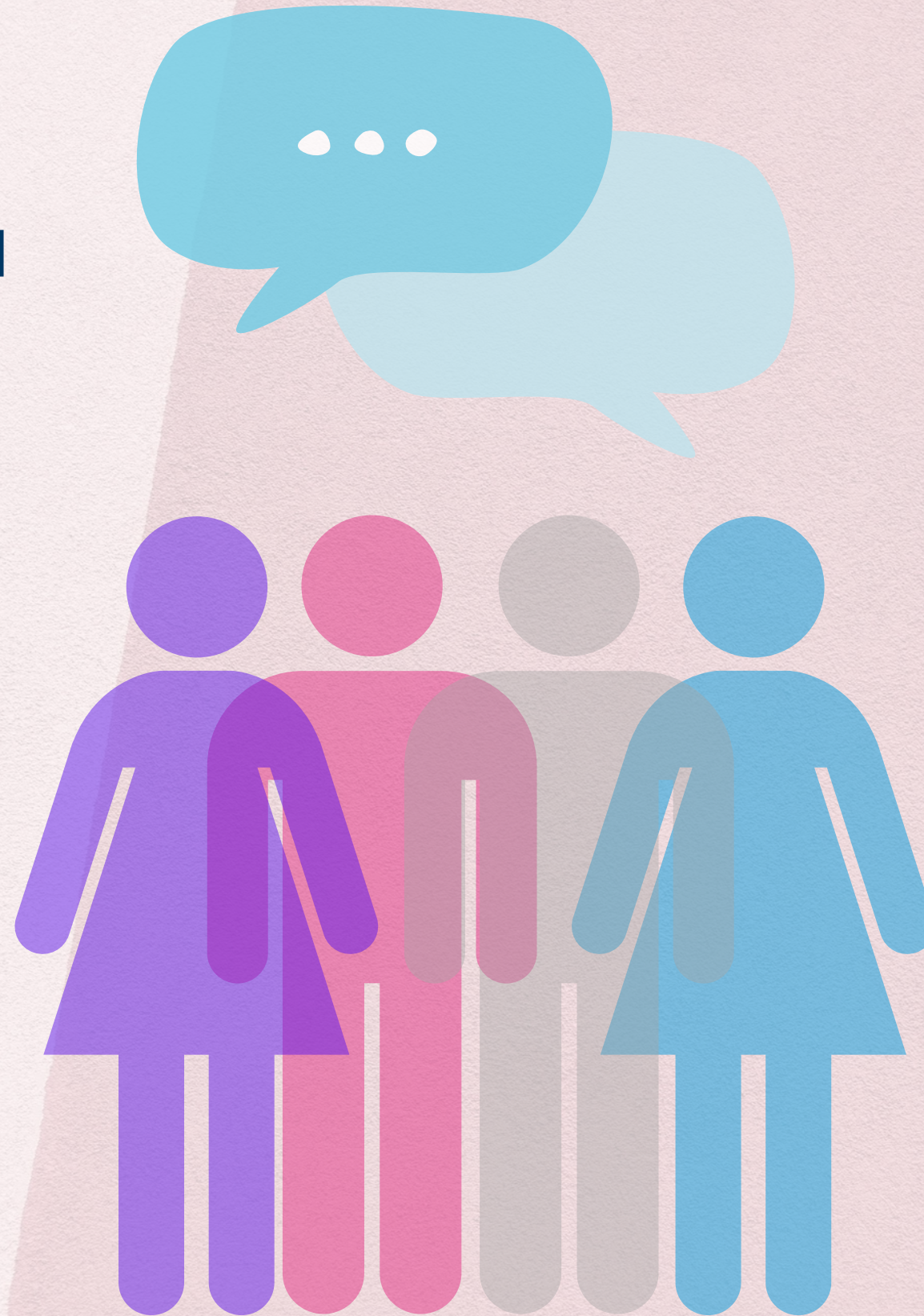
UX Design Manager,
Payments

Actuarial Manager,
Insurance

DIVERSITY & INCLUSION

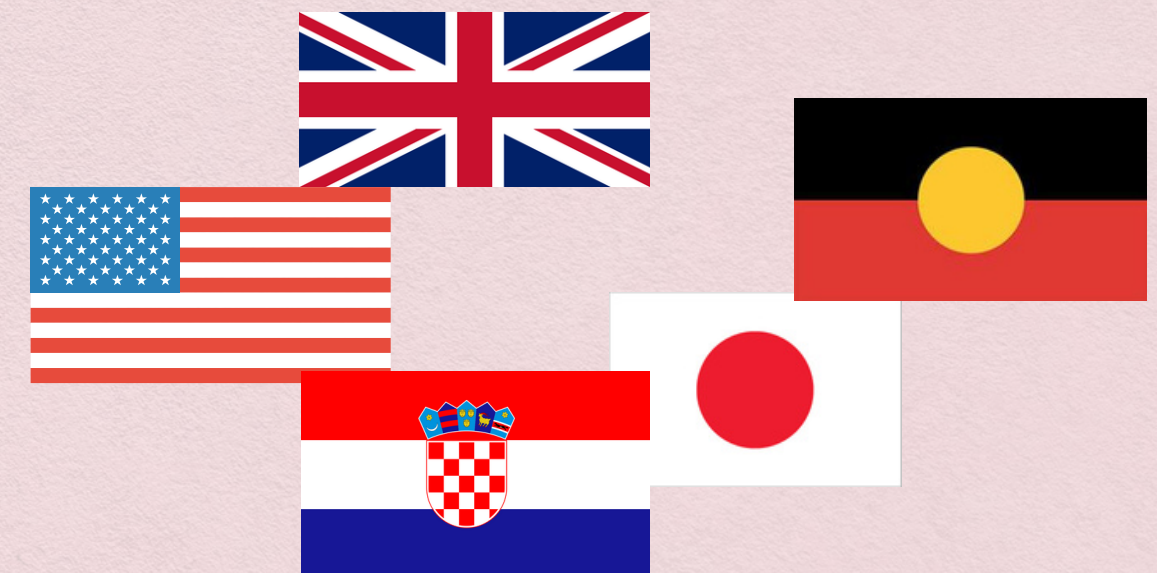
Our current recruitment strategy relating to diversity and gender balance ensures that we work to tailor our approach with the clients we work with, in order to present a diverse range of candidates from different cultures, backgrounds as well as personal and professional experiences.

We do not discriminate based on race, sexual preference, cultural background or any other point of difference.



Parity's consultants' range in age from 28 to 55 and we believe this assists us in presenting a diverse range of ages when shortlisting candidates.

We also boast over 10 different nationalities in our office from Croatia, Hungary, Ireland, Japan and Greece to name a few! Victoria Butt, our Managing Director and Founder is also the Head of Diversity & Inclusion at Entrepreneurs Organisation Sydney.



WE HAVE INVESTED OVER \$1 MILLION IN THE LAST 8 YEARS ON INITIATIVES WHICH ADD TO OUR COMMUNITIES SKILLS, EXPERIENCES AND NETWORKS

MARKET UPDATES

FY2022 Market Insights & Predictions: [Click here](#)

Superannuation Changes for FY2022: [Click here](#)

Mental Resilience in Times of Disruptive Change: [Click here](#).

Returning to the Workplace: [Click here](#)

Building Mentally Resilient Workforce: [Click here](#)

Effective Digital Networking: [Click here](#)

SALARY GUIDE & INSIGHTS

2020: Product guide, [click here](#)
Marketing, Comms & Digital guide, [click here](#).

2019: Product guide, [click here](#)
Marketing, Comms & Digital guide, [click here](#)

2018: Product guide, [click here](#)
Marketing, Comms & Digital guide, [click here](#)

2017: Product guide, [click here](#)
Marketing, Comms & Digital guide, [click here](#)

2016: Product guide, [click here](#)
Marketing, Comms & Digital guide, [click here](#)

TRAINING & EVENTS

Parity *Picks* - Showcasing Executives Differently:

- [Lorraine Thomas](#) of HCF
- [Justin Howell](#) of Pental
- [Nicole Mathias-Browne](#) of CFS

Product Lab: [Click here](#)

Marketing Training: [Click here](#)

PARITY PLUS+
ADDING TO PEOPLE

OUR TEAM

Victoria Butt

Managing Director and Founder
vbutt@parityconsulting.com.au
+61 402 418 326

Amanda Glacken, Division Manager
Product Management and Development
aglacken@parityconsulting.com.au
+61 450 291 368

Vanessa Lalani, Senior Consultant
Marketing, Communications & Digital
Financial Services
vlalani@parityconsulting.com.au
+61 410 001 819

Mirjana Males
Business Manager
mmales@parityconsulting.com.au
+61 421 581 566

Agnes Villanyi, Senior Consultant
Product Management and Development
Wealth Management, Superannuation and
Investments
avillanyi@parityconsulting.com.au
+61 405 395 021

Trish Aspell, Senior Consultant
Product Management and Development
Banking, Insurance and Payments
taspell@parityconsulting.com.au
+61 410 001 635

Jodi Garratt, Senior Consultant
Marketing, Communications & Digital
Financial Services
jgarratt@parityconsulting.com.au
+61 405 381 550

Paul Clarke
Finance Manager
accounts@parityconsulting.com.au
+61 2 8068 2016

Nick Veale, Specialist Consultant
Product Management and Development
Banking, Insurance and Payments
nveale@parityconsulting.com.au
+61 452 089 967

Ai Iwami, Specialist Consultant
Marketing, Communications & Digital
Financial Services
aiwami@parityconsulting.com.au
+61 433 105 588

Rosa Palmieri
Administrative & Marketing Assistant
rpalmieri@parityconsulting.com.au
+61 2 8068 2016



Working with Parity Consulting was a seamless experience. The genuine approach and commitment to ensure both the business and candidate are happy with the successful placement was a standout with Parity. A consultancy I would highly recommend.

~Product professional, Investments



OUR VALUES



Knowledge

We educate and empower through Parity Plus initiatives



Accountable

We do what we say we are going to do



Fun

We love what we do and it shows in our results



Caring

True parity through investing in ALL our relationships



Invest

We understand individual needs by immersing ourselves in our market

CONTACT US

Sydney

Level 2, 37 Bligh Street
Sydney NSW 2000
+61 2 8068 2016

Melbourne

Suite 504, 365 Little Collins Street
Melbourne VIC 3000
+61 3 9016 8606

