

Capability Statement

WHAT WE DO

📍 Level 12, 35 Clarence Street
Sydney NSW 2000

☎ +61 2 8068 2016

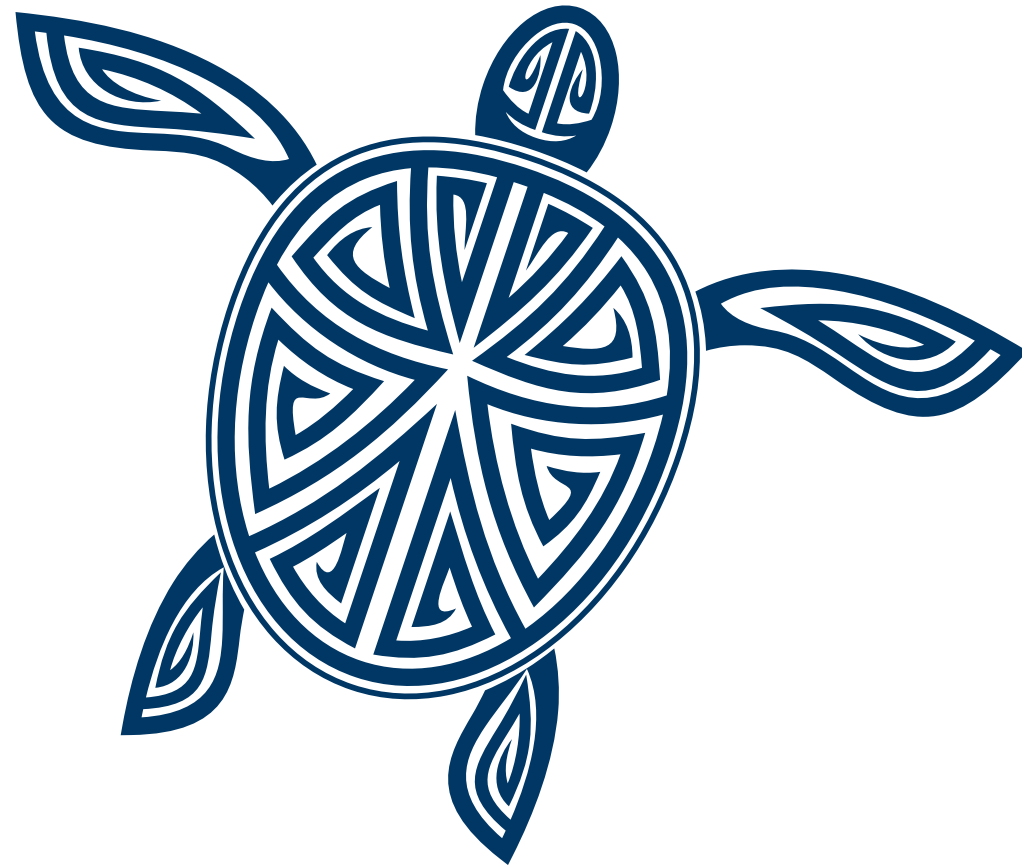
📍 Suite 310, 139 Cardigan Street
Melbourne VIC 3053

☎ +61 3 9923 8081



info@parityconsulting.com.au | www.parityconsulting.com.au





Acknowledgement

Parity Consulting recognise the First Nations People as the Traditional Custodians of this land and celebrate their connection and love for the country.

We only partner with clients who embrace diversity and are committed to cultivating the individuality of each and every employee.

Who We Are

Parity Consulting is a specialist recruitment consultancy which places top talent in permanent, fixed term contract and consulting roles accross the following disciplines:

- Product Management and Development
- Digital
- Marketing and Communications
- Actuarial and Pricing
- Data Analytics and Data Engineering

We love what we do and it shows in our results! To find out more about how we create true parity for our Clients and Candidates, click [here](#).



info@parityconsulting.com.au | www.parityconsulting.com.au



Why Work With Parity?



We ultimately save you **TIME** by reaching the best (*often hidden*) talent in a timely and thorough way.

1 Network

Our reach and relationships.

3 Candidate Experience

Our candidate experience.

5 Insights

Our market insights.

2 Client Experience

Our client experience.

4 Tailored

Tailored filtering and assessment.

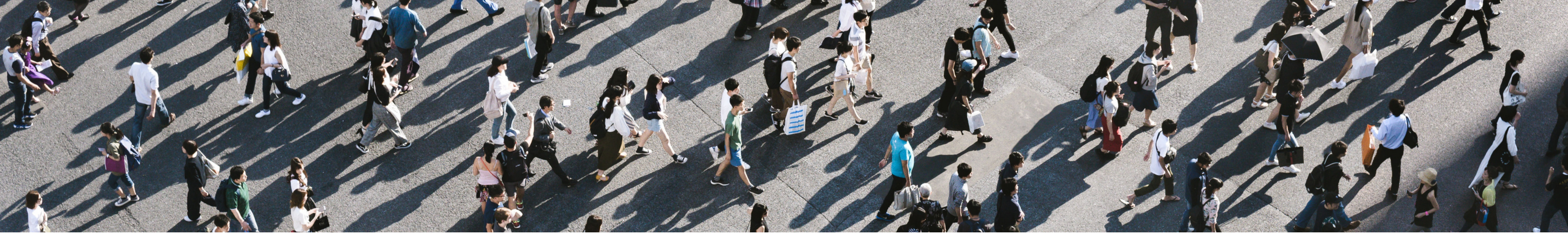
6 Parity Plus

Our value add initiative.



info@parityconsulting.com.au | www.parityconsulting.com.au





Solutions We Offer

Product
Management &
Development
Recruitment

Digital
Recruitment

Marketing &
Communications
Recruitment

Pricing &
Actuarial
Recruitment

Data Science,
Data Analytics
& Data
Engineering
Recruitment

Executive
Search



info@parityconsulting.com.au | www.parityconsulting.com.au



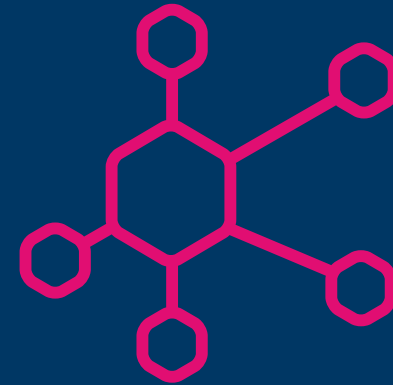
Our Sourcing Methods



Head
Hunting



Referrals



Parity
Networks

PLUS+

Parity *Plus*
Our value-add initiative.



info@parityconsulting.com.au | www.parityconsulting.com.au



Recent Hires

● **Head of Product**
Life Insurance

● **Marketing Manager**
Asset Management

● **Product Marketing Manager**
Asset Management

● **Product Governance Manager**
Wealth Management

● **Digital Head of Marketing**
Digital

● **Data Scientist**
Life Insurance

● **UX Design Manager**
Insurance

● **Digital Marketing Manager**
Wealth Management

● **UX/UI Designer**
SaaS Software

● **Senior Marketing Manager**
Asset Management

● **Product Manager**
Life Insurance

● **VP of Product**
SaaS Software

● **Pricing Actuary, Manager**
Investments

● **Senior Product Manager**
Investments

● **Product Manager**
Fintech

● **Actuarial Manager**
Insurance

● **Head of Marketing**
Banking

● **Head of Digital**
Wealth Management

● **Product Marketing**
e-Commerce

● **Communications Manager**
Fintech

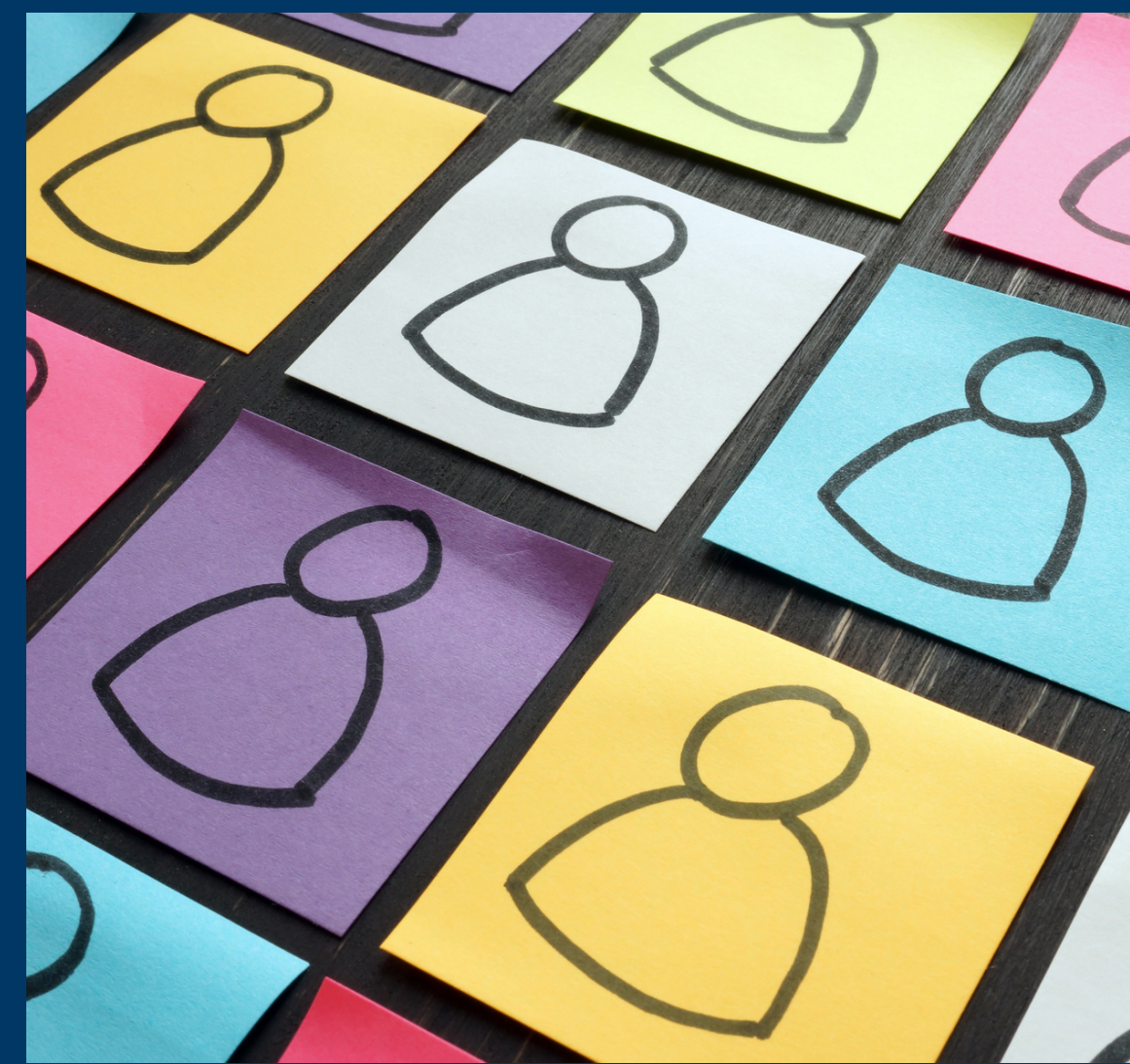


info@parityconsulting.com.au | www.parityconsulting.com.au





Diversity & Inclusion



Our current recruitment strategy relating to diversity, neurodiversity and gender balance ensures that we work to tailor our approach with the clients we work with, in order to present a diverse range of candidates from different cultures, backgrounds as well as personal and professional experiences.

We do not discriminate based on race, sexual preference, cultural background or any other point of difference.

Parity's consultants' range in age from 28 to 55 and we believe this assists us in presenting a diverse range of ages when shortlisting candidates.

We also boast over 10 different nationalities in our office, including team members from the UK, Italy, Croatia, Hungary, Ireland, Japan and India to name a few!



info@parityconsulting.com.au | www.parityconsulting.com.au



We have invested over \$1 million in the last 10 years on initiatives which add to our communities skills, experiences and networks.

Market Updates

- Talent Market & Industry Updates: [Click here](#)
- Neurodiverse Talent - An Untapped Market: [Click here](#)
- Talent Attraction & Engagement FY2022: [Click here](#)
- Mental Resilience In Times of Disruptive Change: [Click here](#)
- Building Mentally Resilient Workforce: [Click here](#)
- Effective Digital Networking: [Click here](#)

Salary Guide & Predictions

Salary Guide & Predictions FY2023-24

Employers Guide: [Click here](#)

Jobseekers Guide: [Click here](#)

Extended Market Insights FY2023-24 : [Click here](#)

Events & Training

- Demystifying Digital Accessibility: [Click here](#)
- Career Roadmap: [Click here](#)
- Leading your People through Menopause: [Click here](#)
- Ending Modern Slavery - HR/TA Leadership Event: [Click here](#)

Parity Picks - Showcasing Executives Differently:

- Lorraine Thomas of HCF
- Justin Howell of Pandal
- Nicole Mathias-Browne of CFS
- Moses Samaha of Equifax
- Andrew Alcock of HUB24
- Sarah Whiteway of Cuscal
- Meray El-Khoury of MetLife
- Product Lab: [Click here](#)
- Marketing Training: [Click here](#)



“

Working with Parity Consulting was a **seamless experience**. The genuine approach and commitment to ensure both the business and candidate are happy with the successful placement was a standout with Parity. A consultancy I would highly recommend.

Product Professional, Investments.



info@parityconsulting.com.au | www.parityconsulting.com.au



Our Values



Invest

We educate and empower through Parity *Plus* initiatives



Accountable

We do what we say we are going to do



Caring

True parity through investing in ALL our relationships



Fun

We love what we do and it shows in our results



Knowledge

We understand individual needs by immersing ourselves in our market



info@parityconsulting.com.au | www.parityconsulting.com.au



Meet our team:



Victoria Butt

Managing Director & Founder
Product Management & Development
Executive Search
Asset & Wealth Management



Vanessa Lalani

Division Lead
Marketing, Communications
& Digital
Asset & Wealth Management



Amanda Glacken

Division Lead
Product, Marketing, Communications &
Digital
Software, Fintech, E-commerce,
Platforms



Agnes Villanyi

Senior Consultant
Product Management & Development
Asset & Wealth Management



Trish Aspell

Senior Consultant
Product Management & Development
Insurance (Health, General & Life), Banking
& Payments



Laura King

Senior Consultant
Digital, Marketing & Communications
Asset & Wealth Management



Edwina Stuckey

Senior Consultant
Marketing, Communications & Digital
Insurance (Health, General & Life),
Banking & Payments



Hima Arafath

Specialist Consultant
Data Science & Data Engineering
Financial Services



Ai Iwami

Specialist Consultant
Marketing, Communications & Digital
Asset & Wealth Management



Hazel Katon

Senior Consultant
Marketing, Communications & Digital
Software, Fintech, E-commerce, Platforms



Eva Nichols

Specialist Consultant
Product Development & Management
Asset & Wealth Management



Deep Dhiman

Recruitment Lead
Data Science & Data Engineering
Financial Services



Paul Clarke

Content Producer



Mirjana Males

Head of Finance, Legal & Risk



Eliza McGivern

**Head of Marketing
& Operations**



Connect with us:

☎ +61 2 8068 2016 | +61 3 9923 8081

✉ info@parityconsulting.com.au

🌐 www.parityconsulting.com.au

📍 Level 12, 35 Clarence Street Sydney NSW 2000

📍 Suite 310, 139 Cardigan Street Melbourne VIC 3053

